

## Photoelectric switches - Relay

## CdS-LC-SM



black , Part No. 93016

## Product Information

**Product no longer available**

- Photoelectric switch for automatic switching of lights
- LED adjustment aid (without delay) for adjustment of the switch-on threshold
- Light value and activation/deactivation delay may be set from the outside using the potentiometer

## Technical Data

<b>Voltage:</b>	110 - 240 V AC 50 / 60 Hz
<b>Dimensions:</b>	55 x 63 x 68 mm
<b>Power consumption:</b>	approx. 0.5 W
<b>Degree / class of protection:</b>	IP54 / Class II
<b>Ambient temperature:</b>	-25 °C to +50 °C
<b>Housing:</b>	polycarbonate, UV-resistant
<b>Operation mode:</b>	Automatic mode (Switch-on threshold 20 Lux, Switch-on delay 10 s, Switch-off delay 40 s)
<b>Connections and wires:</b>	0.25 - 2.5 mm <sup>2</sup> for solid conductors
<b>Switching power:</b>	2300 W, cos $\varphi$ = 1 1150 VA, cos $\varphi$ = 0.5

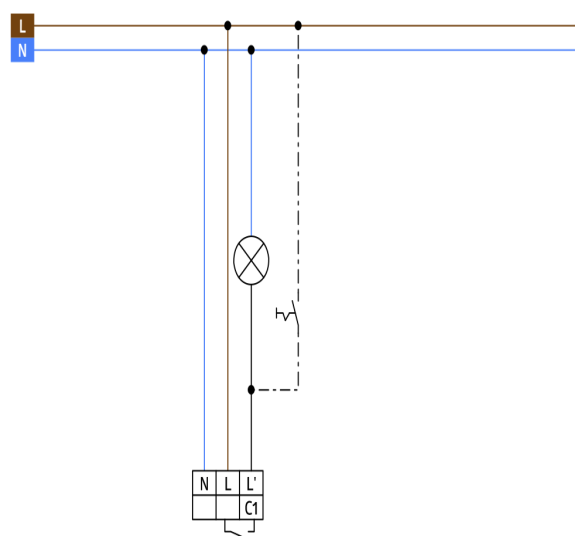
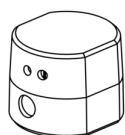
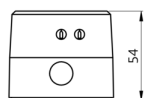
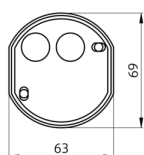
**Type of contact:**  $\mu$ -contact, NO contact  
**Switch-on delay:** 10 s  
**Switch-off delay:** 40 s  
**Switch-on threshold:** 20 - 1000 Lux

---

## Description

Description	Colour	Part number	EAN number
CdS-LC-SM	black	93016	4007529930166

---



Dimensions 93016

Wiring diagrams

---

© 2023 B.E.G. Brück Electronic GmbH